

Green Button Go Scheduler



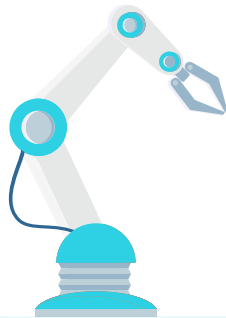
Laboratory Automation Made Easy

Green Button Go Scheduler

Biosero Green Button Go Scheduler is an automated laboratory scheduling software designed for dynamic scientific solutions. Its intelligent architecture offers flexibility and usability to make the most of the tools in your lab. With this powerful software, scientists can integrate, control, and schedule multiple instruments and devices in the lab from a single interface.

Automation Friendly

Automate entire scientific processes



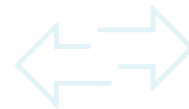
Easy to Use Planning

Drag-and-drop method development with access to a powerful programming engine



Easy Exchange

Swap out instruments on the fly



Flexible Scheduling

Support diverse process planning and scheduling flexibility



Wide Ranging Connectivity

Connect to a wide range of lab instruments and equipment



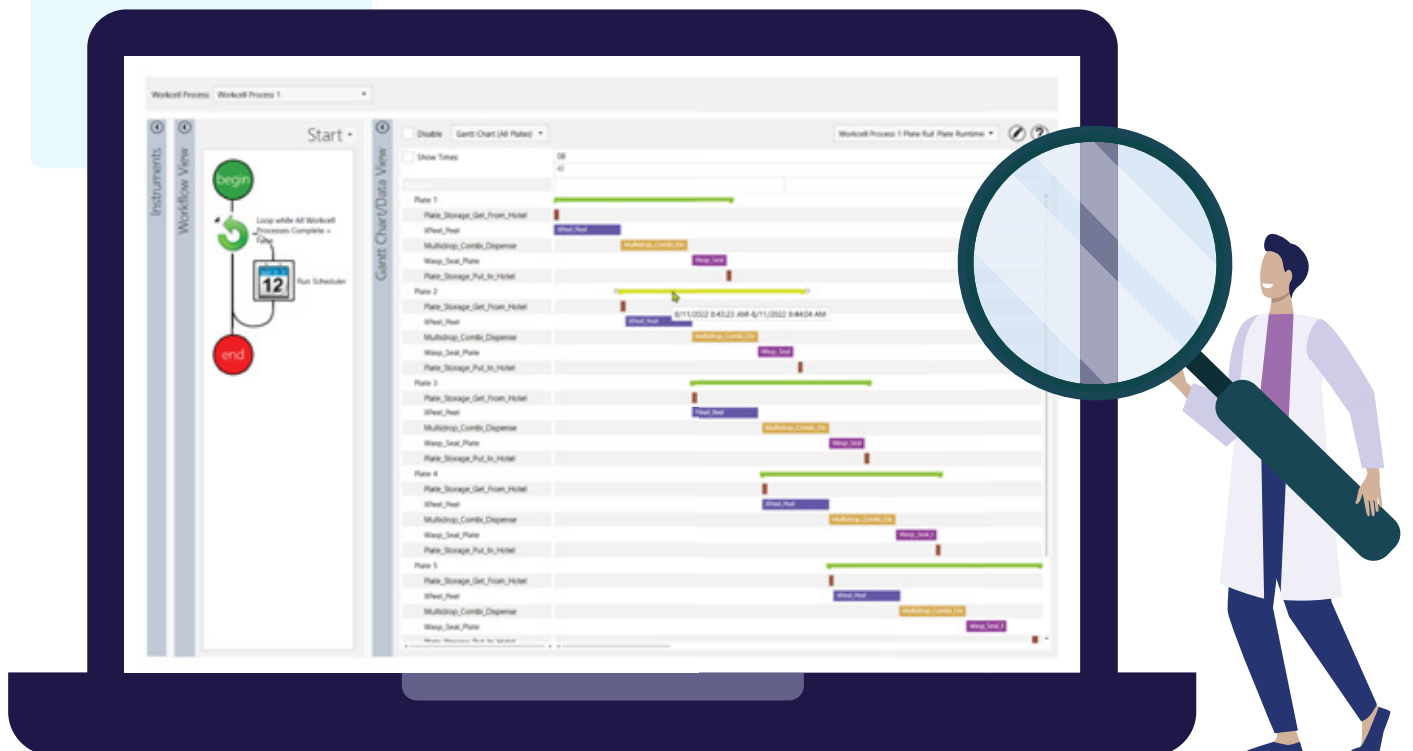
Versatile Data Capture

Capture data and integrate with a variety of informatics tools

GET THE MOST OUT OF YOUR LABORATORY AUTOMATION

Green Button Go Scheduler ensures that you get the most out of your laboratory automation with continuous scheduling optimization and improvements to process efficiency. Integrate, control, and schedule multiple instruments or devices with ease. Superior error-handling functionality and control allow users to adjust protocols and instruments mid-run and restart the experiment where they left off. Our expansive device driver library is supported by a dedicated team and our service contract includes complimentary device driver exchanges, addressing both current and future laboratory needs.

Applying automation to liquid handlers is a pain point for many labs. Green Button Go Scheduler Universal Liquid Handling Interface addresses this issue by connecting all liquid handlers in the lab through a common user interface, regardless of manufacturer. Write simple liquid handling routines that automate liquid transfers, labware movement, and material transport. Enhanced error recovery enables scientists to stop experiments in the middle of a liquid handling procedure and restart at any point in the process, recovering as much of the experiment as possible.



Better decisions in less time, using more data



Highly flexible software designed for laboratory scientists



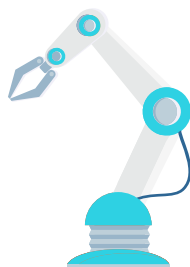
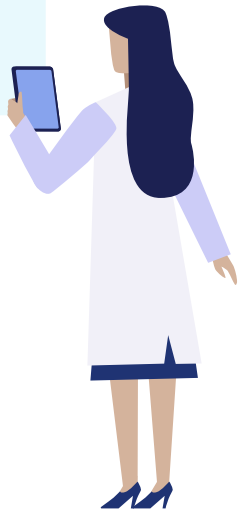
Hardware-agnostic and customizable, supporting automation scheduling needs and virtually any instrument



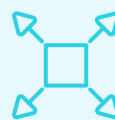
Manage experiments, processes, and instruments from a centralized, user-friendly interface



Reduce errors with robust, reliable software that eliminates variation between runs



Modular architecture allows scientists to swap instruments quickly and easily



Built on an extensible framework allowing expanded functionality





Green Button Go Scheduler Extensions



Batch Planner

Calendar + execute kinetic procedures at a specified frequency + duration



Cell Maintenance Planner

Calendar + execute reoccurring tasks at a specified frequency + duration



Multipath Scheduler

Schedule + control multiple robots and transport systems simultaneously



Assay Scheduler

Schedule + control multiple assays simultaneously with optimal efficiency



21CFR11 Manager

Traceability + reproducibility + accuracy of electronic records + signatures



Universal Liquid Handler Interface

Interact with all liquid handlers through an easy-to-use process builder

Software features built for scientists

Green Button Go Scheduler is built with a modular framework that enables the addition of extensions, offering enhanced functionality for planning, scheduling, and 21CFR Part 11 compliance tasks within and across procedures.



Batch Planner

Green Button Go Scheduler's Batch Planner extension is designed to help lab scientists eliminate bottlenecks and maximize the utility of their instruments and equipment.

It allows users to plan and schedule time-course experiments and batch runs based on workcell and instrument availability. It enables labs to make the most of their instrumentation capacity around the clock and frees scientists to focus on planning their next experiment and project.



Cell Maintenance Planner

Cell Maintenance Planner is a unique solution for handling recurring tasks in cell line generation or culturing applications.

It enables users to create and launch procedures at prescheduled times so the lab remains productive even after scientists have gone home. Lab members can also schedule additional tasks around events specified in other scheduled processes to ensure they are making optimal use of expensive lab instruments and equipment.



Multipath Scheduler

Multipath Scheduler builds on the base functionality of Green Button Go Scheduler software to provide users with more advanced tools for moving samples through the lab.

With this tool, customers can plot several trajectories for different plates that will be run simultaneously and identify the optimal path for each plate. They can also schedule and control multiple robots and transport systems to work simultaneously and in coordination with each other to move samples, materials, and compounds from one part of the lab to another.



Assay Scheduler

The Assay Scheduler extension extends the functionality of Green Button Go Scheduler software to support laboratories that need to enable different types of experimental processes.

It is designed for labs that have multiple scientists using the same systems, allowing team members to run their own experiments with a small number of samples. With this extension, scientists can identify and schedule the optimal time for their experiments, enabling them to maximize instrument usage.



21CFR11 Manager

For regulated laboratories that need to meet strict compliance requirements, Green Button Go Scheduler is available in a version that is certified 21 CFR Part 11 compliant.

This version adds features that enable labs to run automation in compliant environments, such as password protection options, digital signature logs, assigned user roles, and audit trails. It allows customers to maintain security and traceability in the lab while enjoying the benefits of seamless laboratory automation.



Universal Liquid Handler Interface

Applying automation to liquid handlers is a pain point for many labs. The Universal Liquid Handling Interface addresses this issue by connecting all of the differing liquid handlers in the lab through a common user interface.

With this extension, users can write simple liquid handling routines that automate liquid transfers, labware movement, and material transport. Enhanced error recovery enables scientists to stop experiments in the middle of a liquid handling procedure, address the error, and then restart the experiment at the same place or any point in the process, recovering costly reagents.

Orchestrate your discoveries with **Green Button Go** software

Laboratory automation is more than just instruments — Green Button Go Scheduler pairs ultimate flexibility and ultimate usability, providing truly automated, walkaway processes and allowing researchers to focus on the science.



